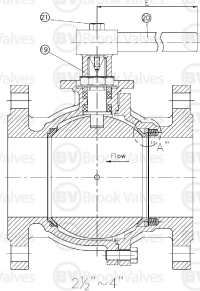
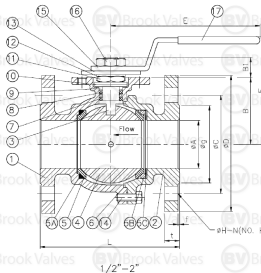


FEATURES:

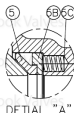
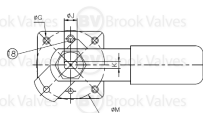
- FACE TO FACE DIMENSION: ANSI B16.1
- FLANGED DIMENSION: ANSI B16.5
- WALL THICKNESS: ANS B16.34
- FLANGED FINISH: MSS SP-6
- PRESSURE TEST & INSPECTION: API 591
- SELF ADJUSTING STEM PACKING
- BLOW-OUT PROOF STEM DESIGN
- ISO 5211 MOUNTING PAD
- METAL SEAT
- UNI DIRECTIONAL
- LEAKAGE CLASS IV

SIZE	L	A	B	B1	F	E	K	M	G	J	D	C	H	N	t	g	f
15	108	15	34.5	14	76	145	6.5	42	M5	10	89	60.5	16	4	11.2	35	1.6
20	117	20	39	14	80	145	6.5	42	M5	10	98	70	16	4	11.2	43	1.6
25	127	25	44	21.5	88	195	9.7	50	M6	14	108	79.5	16	4	11.2	51	1.6
32	140	32	49	21.5	92	195	9.7	50	M6	14	117	89	16	4	12.7	64	1.6
40	165	38	68	24	114	250	9.7	70	M8	18	127	98.5	16	4	14.3	73	1.6
50	178	50	77	24	123	250	9.7	70	M8	18	152	120.5	19	4	15.9	92	1.6
65	190	65	89.5	23	142	310	12	102	M10	20	178	139.5	19	4	17.8	105	1.6
80	203	80	100	23	152	310	12	102	M10	20	190	152.5	19	4	19.1	127	1.6
100	229	100	120.5	29	182	310	15	102	M10	24	229	190.5	19	8	24	157	1.6



425°C MAX TEMPERATURE

NO.	PART NAME	MATERIAL
1	BODY	A351 CF8M
2	FLANGE END	A351 CF8M
3	STEM	17-4PH
4	BALL	STELLITE/CF8M+HARD CHROME
5	BALL SEATS	SS316+STELLITE
5B	SEAL HOLDER	SS316
5C	SPRING DISC (1/2"~2")	INCONEL
	SEAT SPRING (2 1/2"~4")	INCONEL
6	GASKET	GRAPHITE
7	THRUST WASHER	GRAPHITE
8	STEM PACKING	GRAPHITE
9	GLAND	SS304
10	DISC WASHER	17-7PH
11	STEM NUT	SS304
12	NUT LOCK	SS304
13	STOP PLATER	SS304
14	BOLTS	SS304
15	HANDLE	SS304
16	HANDLE NUT	SS304
17	HANDLE COVER	VINYL PLASTIC
18	STOP PIN	SS304
19	LEVER HEAD	A351 CF8
20	LEVER	STEEL PIPE
21	LEVER HEAD BOLT	SS304



REV	A
DATE	Feb-23
SCALE	TO FIT

BROOK VALVES

V2FM-150 - METAL

316SS BALL VALVE 2 PCE FB MM CLASS 150 LEVEL OP