

ISO 5211

ISO 5211

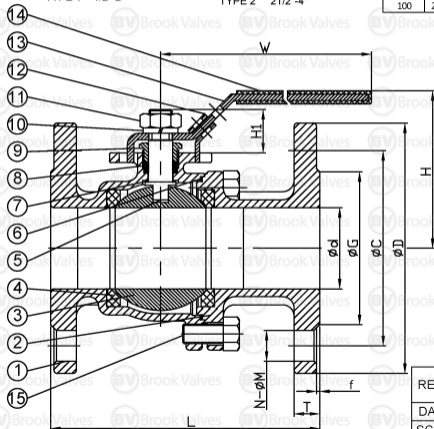


TYPE 1 1/2"-2"



TYPE 2 2 1/2"-4"

SIZE (d)	D	C	G	f	T	N-M	L	H	H1	W	W1	ISO 5211	E	Ma
15	95	65	45	2	16	4-14	115	72	16.5	123	6.5	F03	36	M5
20	105	75	58	2	18	4-14	120	76	16.5	123	6.5	F03	36	M5
25	115	85	68	2	18	4-14	125	92	23.5	183	9.5	F04	42	M5
32	140	100	78	2	18	4-18	130	95	21	153	8	F04	42	M5
40	150	110	88	3	18	4-18	140	125	37.5	246	12	F07	70	M8
50	165	125	102	3	20	4-18	150	132	37.5	246	12	F07	70	M8
65	185	145	122	3	20	4-18	170	166	47	285	16	F07-F10	70-102	M10
80	200	160	138	3	20	8-18	180	176	47	285	16	F07-F10	70-102	M10
100	220	180	158	3	20	8-18	190	189	47	385	16	F07-F10	70-102	M10

**TECHNICAL FEATURES**

1. FACE TO FACE DIMENSION: DIN 3202-F4
2. END FLANGE DIMENSION: PN 16 DIN 2633
3. TEST: EN 12266-1
4. BLOW-OUT PROOF STEM / FULL PORT
5. WITH ISO 5211 MOUNTING PAD
6. INVESTMENT CASTING BODY
7. LOCKING DEVICE

NO.	PART	MATERIAL
1	BODY	ASTM A351 CF8M
2	CAP	ASTM A351 CF8M
3	BALL	ASTM A351 CF8M
4	SEAT	PTFE
5	STEM	SUS 316
6	GASKET	PTFE
7	THRUST WASHER	PTFE
8	PACKING	PTFE
9	GLAND	SUS 304
10	SPRING WASHER	SUS 304
11	STEM NUT	SUS 304
12	LOCKING DEVICE	SUS 304
13	HANDLE	SUS 304
14	PLASTIC COVER	PLASTIC
15	BOLT	SUS 304

REV A

BROOK VALVES

DATE OCT 2016

SCALE TO FIT

V2F-DIN16**316SS BALL VALVE FB DIN 16 LEVER OP**